



PRICE LIST

w.e.f. May 2014

SWITCH CONTROL (INDIA)

L. V. SWITCH GEAR & CONTROL GEAR

Advancing Switch Control Integration

I N D E X



CONTENTS	PAGE
■ METAL CLAD PLUGS & SOCKETS02
■ H.R.C. FUSE BASES OPEN TYPE02
■ H.R.C. FUSE HOLDERS02
■ 22.5 mm DIA PTR SERIES PUSH BUTTON & SELECTOR ACTUATORS03
■ 22.5 mm DIA PTR SERIES CONTACT ELEMENTS03
■ 22.5 mm DIA PTR SERIES LUMINOUS ACTUATORS03
■ 22.5 mm DIA PTR SERIES PILOT LIGHTS (INCLUDING L.E.D. TYPE).....	.04
■ 22.5 mm DIA PTR SERIES PUSH BUTTON STATIONS.....	.04
■ 22.5 mm DIA PTR SERIES SPARES AND ACCESORIES.....	.04
■ 22.5 mm PUSH BUTTON UNITS (PLASTIC BODY)05
■ 22.5 mm PUSH BUTTON UNITS (SHEET METAL HOUSING)05
■ SOLID STATE BUZZERS05
■ FUSE LINK05
■ CAM OPERATED ROTARY SWITCHES (6A)06
■ AMMETER SELECTOR SWITCHES07
■ VOLTMETER SELECTOR SWITCHES.....	.07
■ CAM OPERATED ROTARY SWITCHES (10A, 16A, 25A, 32A, 40A, 63A)08
■ CAM OPERATED ROTARY SWITCHES MOTOR DUTY APPLICATIONS09
■ CAM OPERATED ROTARY SWITCHES FORWARD-OFF-REVERSE, PHASE CHANGEOVERS.....	.09
■ CAM OPERATED ROTARY SWITCHES FOR CHANGEOVER & METAL BOX ENCLOSURES10
■ SWITCHES WITH METAL BOX.....	.10
■ SPRING RETURN SWITCHES10
■ CAM OPERATED ROTARY SWITCH SPARES.....	.11
■ TERMS AND CONDITIONS11

METAL CLAD PLUGS & SOCKETS (ALUMINIUM DIE CAST) TYPE-SC

DESCRIPTION	RATING AMPS.	CAT NO.	UNIT PRICE	STD. PACKING
PLUGS				
2 Pole + Earth, 250V	10 A	DP 10	88.00	20
2 Pole + Earth, 250V	20 A	DP20	96.00	20
3 Pole + Earth, 440V	20 A	TP20	130.00	20
3 Pole + Earth, 440V	30 A	TP30	260.00	06
SOCKETS				
2 Pole + Earth, 250V	10 A	DS 10	96.00	20
2 Pole + Earth, 250V	20 A	DS 20	110.00	20
3 Pole + Earth, 440V	20 A	TS 20	140.00	20
3 Pole + Earth, 440V	30 A	TS 30	280.00	01



Conduit Box For DS 10-Rs. 40.00, For DS 20-Rs. 44.00, For TS 20-Rs. 48.00, For TS 30-Rs. 54.00

PLUGS & SOCKETS IN SHEET STEEL ENCLOSURE (WITHOUT MCB)

DESCRIPTION	RATING AMPS.	CAT NO.	UNIT PRICE	STD. PACKING
2 Pole + Earth, 250V Plug & Socket In S.S. Enclosure	10A	DPSB10	495.00	01
2 Pole + Earth, 250V Plug & Socket In S.S. Enclosure	20A	DPSB20	550.00	01
3 Pole + Earth, 250V Plug & Socket In S.S. Enclosure	20A	TPSB 20	825.00	01
3 Pole + Earth, 250V Plug & Socket In S.S. Enclosure	30A	TPSB 30	1144.00	01



HRC FUSE BASES TYPE FBO

DESCRIPTION	CAT NO.	UNIT PRICE	STD. PACKING
160 Amps In Bakelite Moulding With Circlip Contact	FBO-160C	160.00	10
250 Amps In Bakelite Moulding With Circlip Contact	FBO-250C	425.00	01
400 Amps In Bakelite Moulding With Circlip Contact	FBO-400C	608.00	01
630 Amps In Bakelite Moulding With Circlip Contact	FBO-630C	875.00	01
160 Amps In DMC Moulding With Circlip Contact	FBO-160CD	170.00	01
250 Amps In DMC Moulding With Circlip Contact	FBO-250CD	460.00	01
400 Amps In DMC Moulding With Circlip Contact	FBO-400CD	660.00	01
630 Amps In DMC Moulding With Circlip Contact	FBO-630CD	900.00	01
250 Amps In Sheet Metal Plate	FBO-250LT	594.00	01
400 / 630 Amps In Sheet Metal Plate	FBO-630LT	690.00	01



BAKELITE MOULDED FUSE HOLDERS TYPE SC

DESCRIPTION	CAT NO.	UNIT PRICE	STD. PACKING
20 Amps Front Connection	SC-20H	80.00	10
20 Amps Bus Bar Connection	SC-20B	95.00	10
20 Amps Back Connection	SC-20P	120.00	10
32 Amps Front Connection	SC-32H	141.00	10
32 Amps Bus Bar Connection	SC-32B	158.00	10
63 Amps Front Connection	SC-63H	198.00	10
63 Amps Bus Bar Connection	SC-63B	242.00	10
125 Amps Front Connection	SC-125H	490.00	10
125 Amps Bus Bar Connection	SC-125B	560.00	10



ACTUATORS WITH METALLIC FRONT RING AND BEZEL

**PTR SERIES-
CUTOUT DIA 22.5 mm**

DESCRIPTION	CAT NO.	UNIT PRICE	STD. PACKING
Flush Buttons -	PTR-AS	50.00	20
Flush Booted Button -	PTR-ADP	70.00	20
Projecting Button -	PTR-AU	60.00	20
Mushroom Button -	PTR-AM	70.00	10
Mushroom Stayput-Press To Lock And Turn To Release	PTR-AMS	92.00	10
Mushroom Jumbo Button Press To Lock Turn To Reset	PTR-AJB	110.00	05
Mushroom Jumbo Button Spring Return	PTR-AJBS	130.00	05
Selector Two Position Maintained	PTR-A22	116.00	10
Selector Two Position Spring Return	PTR-A22S	116.00	10
Selector Three Position Maintained	PTR-A33	116.00	10
Selector Three Position Spring Return	PTR-A33S	116.00	10
Key Selector Two Position Lockable In Both Position	PTR-A2K	180.00	10
Key Selector Three Position Lockable In Both Position	PTR-A3K	180.00	10
Emergency Stop Press To Lock And Key To Reset	PTR-APL	230.00	10
Twin-spring Return, G Knob Marked 'I' & R Knob Marked 'O'	PTR-ATB	104.00	10



CONTACT ELEMENT SUITABLE FOR ACTUATORS



DESCRIPTION	CAT NO.	UNIT PRICE	STD. PACKING
NO Contact For Rear Connection	PTR-A1	40.00	50
NC Contact For Rear Connection	PTR-A2	40.00	50

LUMINOUS ACTUATOR WITH METALLIC FRONT RING AND BEZEL



DESCRIPTION	CAT NO.	UNIT PRICE	STD. PACKING
Luminous Spring Return Actuator, With Poly Carbonate Lens, Bulb, Series Resistor For 220V, 110V, 48V, 24V	PTR-ATR	128.00	10
Luminous Spring Return Actuator, With Poly Carbonate Lens, Bulb, But Without Series Resistor For 220V, 110V, 48V, 24V	PTR-AT	124.00	10
Luminous Spring Return Actuator With Poly Carbonate Lens And Cluster L.E.D. For 220V, 110V, 48V, 24V AC or DC	PTR-ATLED	170.00	10
Twin Luminous Spring Return Green Knob Marked 'I' & Red Knob Marked 'O' With Amber Lamp, Series Resistor Suitable For 220V, 110V, 48V, 24V	PTR-ATBLR	170.00	08
Twin Luminous Spring Return Green Knob Marked 'I' & Red Knob Marked 'O' With Amber Lamp, But Without Series Resistor For 220V, 110V, 48V, 24V	PTR-ATBL	166.00	08
Twin Luminous Spring Return Green Knob Marked 'I' & Red Knob Marked 'O' With Poly Carbonate Lens & Cluster L.E.D For 220V, 110V, 48V, 24V AC or DC	PTR-ATBLED	220.00	10
Luminous Selector 2 Position With Poly Carbonate Knob, Bulb Series Resistor For 220V, 110V, 48V, 24V	PTR-A2PLSR	190.00	10
Luminous Selector 2 Position With Poly Carbonate Knob, Bulb But Without Series Resistor For 110V, 48V, 24V	PTR-A2PLSD	184.00	10
Luminous Selector 2 Position With Poly Carbonate Lens & Cluster L.E.D. For 220V, 110V, 48V, 24V AC or DC	PTR-A2PLLED	222.00	10
Luminous Selector 3 Position With Poly Carbonate Knob, Bulb Series Resistor For 220V, 110V, 48V, 24V	PTR-A3PLSR	190.00	10
Luminous Selector 3 Position With Poly Carbonate Knob, Bulb But Without Series Resistor For 220V, 110V, 48V, 24V	PTR-A3PLSD	184.00	10
Luminous Selector 3 Position With Poly Carbonate Lens & Cluster L.E.D. For 220V, 110V, 48V, 24V AC or DC	PTR-A3PLLED	222.00	10





DESCRIPTION	CAT NO.	UNIT PRICE	STD. PACKING
Pilot Light With Poly Carbonate Lens, Lamp Holder, Bulb, Series Resistor Suitable For 220V, 110V, 48V, 24V	PTR-ALR	110.00	10
Pilot Light With Poly Carbonate Lens Lamp Holder, Bulb But Without Series Resistor Suitable For 110V, 48V, 24V	PTR-AL	108.00	10
Pilot Lights With Poly Carbonate Lens With Cluster L.E.D For 220V, 110V, 48V, 24V	PTR-ALED	135.00	10
Pilot Lights In Barrel Type Poly Carbonate Lens With Surface Mounted L.E.D For 220V, 110V, 48V, 24V	PTR-AFLED	80.00	20

- For Blue/White Colour Add Rs. 50 Each In The Above Prices
- Colours Available are: Red, Amber, Yellow, Blue and White

PUSH BUTTON STATION

SURFACE MOUNTING ALUMINIUM CASTING		PENDENT ALUMINIUM CASTING	PENDENT THERMOPLASTIC	PTR-AP HOUSING
DESCRIPTION	PTR-AP SERIES	PTR-APP SERIES	PTR-PPP SERIES	
ONE WAY	PTR-API	340.00	402.00	
	API + AMS	382.00		
TWO WAY	PTR-AP2	480.00	550.00	374.00
	AP2 + AMS	540.00		
THREE WAY	PTR-AP3	640.00	728.00	
FOUR WAY	PTR-AP4	819.00	880.00	506.00
SIX WAY	PTR-AP6	1340.00	1449.00	660.00
EIGHT WAY	PTR-AP8	1675.00	1848.00	913.00
TEN WAY	PTR-AP10	1995.00	2079.00	1067.00
TWELVE WAY	PTR-AP12	2450.00	2385.00	
FOURTEEN WAY	PTR-AP14	2772.00	2890.00	
EIGHTEEN WAY	PTR-AP18	3811.00	3927.00	



Standard packing is 01 for all, except PTR-AP1 which is 02

- For Push Button Station With Canopy, Add 10% Extra On The Above Prices.
- All Above Push Button Stations Have Flush Button With 1NO or 1NC Contact Element.
- Different Actuator/Contact Block Arrangement Can Be Quoted On Request

PTR SERIES SPARES AND ACCESORIES

DESCRIPTION	CAT NO.	UNIT PRICE	STD. PACKING
Legend Plates With Inscription On, Off, Start, Stop, Forward, Reverse, Test, Accept, Emergency, Reset & Blank	PTR-ASLP	8.00	100
Poly Carbonate Lens Without Lens Holder Suitable For Pilot Light	PTR-ASL	12.00	50
Lens Holder Assembly With Poly Carbonate Lens	PTR-ASLA	55.00	20
Lens Holder Assembly With Poly Carbonate Lens & Ring Suitable For Luminous Light	PTR-ASILA	61.00	20
Filament Bulb BA-9S 2.6 Watt In 130V, 110V, 48V, 24V	PTR-ASBL	33.00	100
Protective Rubber Boot	PTR-ASPB	22.00	20
Bulb Extractor (bulb Puller)	PTR-ASBE	24.00	10
Adopter For Fixing Dia 22.5 mm In Dia 30.5 mm Hole	PTR-ASAP	15.00	50
Blanking Plug For Dia 22.5 mm Hole	PTR-ASBP	20.00	50





PUSH BUTTON UNITS (PLASTIC BODY) 1 NO + 1 NC (PANEL CUTOUT DIA 22.5 mm)

DESCRIPTION	CAT NO.	UNIT PRICE	STD. PACKING
Flush Knob 1 NO + 1NC	PTR-BTH	24.00	20
Flush Knob 1 NO + 1NC (with chrome ring)	PTR-THF	28.00	20



PUSH BUTTON UNITS (PLASTIC BODY) 1 NO + 1 NC (PANEL CUTOUT DIA 29.5 mm)

Flush Knob 1 NO + 1NC	PTR-AD	30.00	20
-----------------------	--------	-------	----



• Colours available are : Red, Green, Yellow, Black, White and Blue

PUSH BUTTON CONTROL UNITS (PLASTIC DUAL COLOUR) WITH 1NO + 1NC (DIA 22.5 mm)

DESCRIPTION	CAT NO.	UNIT PRICE	STD. PACKING
One Way with BTH (Dia 22.5 mm)	PTR-P1	94.00	2
Two Way with BTH (Dia 22.5 mm)	PTR-P2	130.00	1
Three Way with BTH (Dia 22.5 mm)	PTR-P3	180.00	1



Please contact to dealer for PTR-THF Push Button Control Units.

PUSH BUTTON CONTROL UNITS WITH 1NO + 1NC - POWER COATED SHEET METAL HOUSING

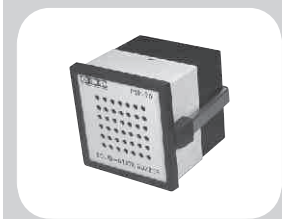
DESCRIPTION	CAT NO.	UNIT PRICE	STD. PACKING
One Way with BTH (Dia 22.5 mm)	PTR-AS1	116.00	2
Two Way with BTH (Dia 22.5 mm)	PTR-AS2	154.00	1
Three Way with BTH (Dia 22.5 mm)	PTR-AS3	211.00	1
One Way with AD (Dia 29.5 mm)	PTR-AD1	122.00	2
Two Way with AD (Dia 29.5 mm)	PTR-AD2	167.00	1
Three Way with AD (Dia 29.5 mm)	PTR-AD3	230.00	1



Please contact to dealer for PTR-THF Push Button Control Units.

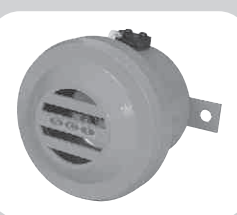
SOLID STATE BUZZERS TYPE - AB

DESCRIPTION	CAT NO.	UNIT PRICE	STD. PACKING
Moulded Housing, Suitable For 230V, 110V, 48V, 24V AC (96 x 96)	PTR-ABA/ABD	680.00	01
Moulded Housing, Suitable For 230V, 110V, 48V, 24V AC (96 x 96) (MULTI TONE)	PTR-ABAM/ABDM	770.00	01
Moulded Housing, Suitable For 230V, 110V, 48V, 24V AC (72 x 72)	PTR-ABA/ABD	550.00	01
Moulded Housing, Suitable For 230V, 110V, 48V, 24V AC (72 x 72) (MULTI TONE)	PTR-ABAM/ABDM	680.00	01



INDUSTRIAL HOOTERS TYPE-AH

DESCRIPTION	CAT NO.	UNIT PRICE	STD. PACKING
Moulded Housing, Suitable For 230V, 110V, 48V, 24V AC	PTR-AHA	570.00	01
Moulded Housing, Suitable For 220V, 110V, 48V, 24V DC	PTR-AHD	700.00	01



SCNS TYPE FUSE LINK WITH STAGGERED TAGS 415V AC

RATING AMPS.	CAT NO.	UNIT PRICE	STD. PACKING
2A	SC-NS2	29.00	20
To	To		
32A	SC-NS32		

TYPE T-660 AC OFFSET TAGS (2 HOLE FIXING-BOLTED)

RATING AMPS.	CAT NO.	UNIT PRICE	STD. PACKING
32A	SC-TIA32	53.00	10
63A	SC-TIS63	62.00	10
100A	SC-TCP100	145.00	10
125A	SC-TCP125	167.00	10



CAM OPERATED ROTARY SWITCHES (SWITCHES - 6 AMPS. TYPE 'SC6')

SWITCHING	POLE	PROGRAMME	UNIT PRICE	SWITCHING	POLE	PROGRAMME	UNIT PRICE
ON – OFF (60°) 	1 2 3 4	SI001 SI002 SI003 SI004	94.00 114.00 126.00 150.00	SIX WAY NO OFF (60°) 	1 2 3	SI052 SI072 SI092	182.00 344.00 450.00
TWO WAY NO OFF (90°) 	1 2 3 4	SI037 SI038 SI039 SI040	114.00 150.00 180.00 222.00	SIX WAY WITH OFF (45°) 	1 2 3	SI063 SI083 SI103	234.00 406.00 545.00
TWO WAY WITH OFF (60°) 	1 2 3 4	SI025 SI026 SI027 SI028	114.00 150.00 180.00 222.00	SEVEN WAY WITH OFF (45°) 	1 2 3	SI064 SI084 SI104	236.00 408.00 520.00
THREE WAY NO OFF (60°) 	1 2 3 4	SI049 SI069 SI089 SI120	132.00 180.00 266.00 320.00	SEVEN WAY WITH NO OFF (45°) 	1 2 3	SI053 SI073 SI093	236.00 408.00 520.00
THREE WAY WITH OFF (90°) 	1 2 3 4	SI060 SI080 SI100 SI131	132.00 180.00 266.00 320.00	EIGHT WAY WITH NO OFF (45°) 	1 2 3	SI054 SI074 SI094	236.00 440.00 594.00
FOUR WAY NO OFF (90°) 	1 2 3 4	SI050 SI070 SI090 SI121	150.00 226.00 290.00 380.00	EIGHT WAY WITH OFF (30°) 	1 2	SI065 SI085	236.00 440.00
FOUR WAY WITH OFF (60°) 	1 2 3 4	SI061 SI081 SI101 SI132	160.00 266.00 355.00 423.00	NINE WAY WITH NO OFF (30°) 	1 2	SI055 SI075	273.00 452.00
FIVE WAY NO OFF (60°) 	1 2 3	SI051 SI071 SI091	183.00 302.00 408.00	NINE WAY WITH OFF (30°) 	1 2	SI066 SI086	274.00 484.00
FIVE WAY WITH OFF (60°) 	1 2 3	SI062 SI082 SI102	183.00 302.00 408.00	TEN WAY WITH OFF (30°) 	1 2	SI056 SI076	286.00 498.00



CAM OPERATED ROTARY SWITCHES (SWITCHES- 6 AMPS. TYPE 'SC6)

SWITCHING	POLE	PROGRAMME	UNIT PRICE	SWITCHING	POLE	PROGRAMME	UNIT PRICE
TEN WAY WITH NO OFF (30°) 	1	SI067	450.00	ELEVEN WAY WITH OFF (30°) 	1	SI068	460.00
	2	SI087	536.00		2	SI088	580.00
ELEVEN WAY NO OFF (30°) 	1	SI057	454.00	TWELVE WAY NO OFF (30°) 	1	SI058	460.00
	2	SI077	568.00		2	SI078	616.00

AMMETER SELECTOR SWITCHES

SWITCHING	POLE	AMPS.	TYPE	PROGRAMME	DESCRIPTION	UNIT PRICE
	03	06	SC6	SI325	To Read Current To Be Used With Ct With Off	173.00
	03	10	SC10	SI325	--Do--	204.00
	03	10	SC10	SI710		664.00
	03	16	SC16	SI710	Direct Reading	702.00
	03	25	SC25	SI710	Ammeter Selector	755.00
	03	32	SC32	SI710	Switches Without Ct's	822.00
	03	40	SC40	SI710		1185.00
	03	63	SC63	SI710		1300.00

VOLTMETER SELECTOR SWITCHES






SWITCHING	POLE	AMPS.	TYPE	PROGRAMME	DESCRIPTION	UNIT PRICE
	03	06	SC6	SI312	Voltage Between Phase To Phase With Off	130.00
	03	10	SC10	SI312	--Do--	182.00
	03	06	SC6	SI313	Voltage Between Phase To Phase And Phase To Neutral With Off	238.00
	03	10	SC10	SI313	--Do--	378.00
	03	06	SC6	SI311	Voltage Between Phase To Neutral With Off	222.00
	03	10	SC10	SI314	Voltage Between Phase To Phase And Phase To Neutral Without Off	378.00

AMMETER VOLTMETER COMBINED SELECTOR SWITCHES

SWITCHING	POLE	AMPS.	TYPE	PROGRAMME	DESCRIPTION	UNIT PRICE
	03	10	SC10	SI338	Voltage Between Phase To Neutral And Current Of That Phase	432.00



CAM OPERATED ROTARY SWITCHES

	SWITCHING	POLE	PROGRAMME	10 A. SC10	16 A. SC16	25 A. SC25	32 A. SC32	40 A. SC40	63 A. SC63
	ON – OFF	1	SI195	174.00	189.00	206.00	253.00	367.00	410.00
	OFF	2	SI198	211.00	220.00	250.00	299.00	430.00	504.00
	ON ● ON	3	SI197	233.00	256.00	320.00	374.00	520.00	620.00
	OFF	4	SI196	248.00	270.00	378.00	452.00	600.00	700.00
	ON – OFF	1	SI191	174.00	189.00	206.00	253.00	367.00	410.00
	OFF	2	SI192	211.00	220.00	250.00	299.00	430.00	504.00
	● ON	3	SI199	233.00	256.00	320.00	374.00	520.00	620.00
		4	SI194	248.00	270.00	378.00	452.00	600.00	700.00
	TWO WAY WITH NO – OFF	1	SI037	225.00	237.00	257.00	304.00	433.00	512.00
	1	2	SI038	257.00	275.00	346.00	389.00	620.00	714.00
	2 ● 2	3	SI039	319.00	354.00	450.00	518.00	814.00	962.00
	1	4	SI040	384.00	412.00	506.00	582.00	950.00	1095.00
	TWO WAY WITH OFF	1	SI151	225.00	237.00	257.00	304.00	433.00	512.00
	OFF	2	SI152	257.00	275.00	346.00	389.00	620.00	714.00
	2 ● 1	3	SI153	319.00	354.00	450.00	518.00	814.00	962.00
	OFF	4	SI154	384.00	412.00	506.00	582.00	950.00	1095.00
	THREE WAY WITH OFF	1	SI060	256.00	301.00	345.00	400.00	562.00	632.00
	OFF	2	SI080	311.00	365.00	450.00	510.00	821.00	910.00
	3 ● 1	3	SI100	383.00	495.00	600.00	686.00	1084.00	1225.00
	2	4	SI131	496.00	625.00	720.00	841.00	1349.00	1500.00
	FOUR WAY WITH NO OFF	1	SI050	293.00	306.00	368.00	440.00	629.00	720.00
	1	2	SI070	373.00	380.00	530.00	625.00	971.00	1075.00
	4 ● 2	3	SI090	392.00	570.00	725.00	825.00	1355.00	1500.00
	3	4	SI121	578.00	675.00	865.00	972.00	1722.00	1900.00
	FIVE WAY WITH OFF	1	SI062	339.00	375.00	495.00	594.00	740.00	830.00
	OFF	2	SI082	453.00	550.00	702.00	836.00	1171.00	1350.00
	5 ● 1 4 ● 2 3	3	SI102	571.00	815.00	906.00	1062.00	1646.00	1850.00
	SIX WAY WITH NO OFF	1	SI052	346.00	385.00	510.00	612.00	950.00	1050.00
	1	2	SI072	451.00	585.00	900.00	1104.00	1370.00	1525.00
	6 ● 2 5 ● 3 4	3	SI092	608.00	905.00	984.00	1091.00	1932.00	2200.00
	SEVEN WAY WITH OFF	1	SI064	378.00	430.00	530.00	625.00	990.00	1120.00
	OFF	2	SI084	522.00	630.00	950.00	1122.00	1549.00	1699.00
	7 ● 1 6 ● 2 5 ● 3 4	3	SI104	764.00	950.00	1130.00	1275.00	2310.00	2575.00
	EIGHT WAY WITH NO OFF	1	SI054	425.00	470.00	543.00	642.00	1082.00	1280.00
	1	2	SI074	563.00	750.00	960.00	1144.00	1827.00	2050.00
	8 ● 2 7 ● 3 6 ● 4	3	SI094	891.00	985.00	1242.00	1366.00	2584.00	2850.00
	5								



ROTARY SWITCHES FOR MOTOR DUTY APPLICATIONS

SCI MAKE CAM OPERATED ROTARY SWITCHES SUITABLE FOR SWITCHING CONTROLLING AND STARTING 3 PHASE 440 VOLTS 50Hz SQUIRREL CAGE INDUCTION MOTORS FOR AC3 AND AC4 DUTIES.

	SWITCHING	POLE	AMPS.	TYPE	PROGRAMME	DESCRIPTION	UNIT PRICE
		03	16	SC16	SI003	ON-OFF SWITCH	256.00
		03	25	SC25	SI003	ON-OFF SWITCH	320.00
		03	32	SC32	SI003	ON-OFF SWITCH	374.00
		03	40	SC40	SI003	ON-OFF SWITCH	520.00
		03	63	SC63	SI003	ON-OFF SWITCH	620.00
		03	16	SC16	SI200	STAR-DELTA SWITCH	396.00
		03	25	SC25	SI200	STAR-DELTA SWITCH	525.00
		03	32	SC32	SI200	STAR-DELTA SWITCH	578.00
		03	40	SC40	SI200	STAR-DELTA SWITCH	1044.00
		03	63	SC63	SI200	STAR-DELTA SWITCH	1148.00

FORWARD - OFF - REVERSE SWITCHES

SWITCHING	POLE	AMPS.	TYPE	PROGRAMME	DESCRIPTION	UNIT PRICE
	03	06	SC 6	SI211	THREE POLE REVERSING	180.00
	03	10	SC10	SI211		261.00
	03	16	SC16	SI211		340.00
	03	25	SC25	SI211		382.00
	03	32	SC32	SI211		426.00
	03	40	SC40	SI211		1000.00
	03	63	SC63	SI211		1200.00
	03	25	SC25	SI217	TWO SPEED FORWARD REVERSE SWITCHES	814.00
	03	25	SC25	SI446	TWO SPEED FORWARD SWITCH IN DIFFERENT PHASE COMBINATION	740.00
	03	25	SC25	SI212	TWO SPEED FORWARD SWITCHES	650.00





CHANGEOVER SWITCHES (90° DOUBLE THROW)

SWITCHING	POLE	PROGRAMME	25 AMPS SC25 (Rs.).	32 AMPS SC32 (Rs.).	40 AMPS SC40 (Rs.).	63 AMPS SC63 (Rs.).
	02	SI152CO	378.00	411.00	644.00	920.00
	03	SI153CO	545.00	580.00	806.00	1230.00
	04	SI154CO	712.00	748.00	944.00	1530.00

Additional Price For Sheet Metal Box For 2 Pole Rs. 160.00 For 3 & 4 Pole Rs. 300.00

SWITCHES WITH METAL BOX 60°

	SWITCHING	POLE	PROGRAMME	16 AMPS SC16 (Rs.).	25 AMPS SC25 (Rs.).	32 AMPS SC32 (Rs.).
	Three Pole Reversing (Type SI 211)	03	SI913	580.00	650.00	680.00
	Three Pole On - Off	03	SI244	440.00	530.00	600.00
	Three Pole Reversing	03 03	SI912 SI910	435.00 -----	515.00 -----	544.00 750.00

SPRING RETURN SWITCHES

SWITCHING	POLE	PROGRAMME	DESCRIPTION	16 AMPS SC16 (Rs.).	25 AMPS SC25 (Rs.).
	1 2 3 4	SI351 SI352 SI353 SI354	On-off With Spring Return To Off	264.00 307.00 369.00 393.00	309.00 375.00 480.00 567.00
	1 2 3	SI361 SI362 SI363	Double Throw Spring Return Both Side To Off	330.00 393.00 501.00	386.00 519.00 675.00
	1 2 3	SI364 SI365 SI369	Three Position With One Position Spring Return To Off	330.00 393.00 501.00	386.00 519.00 675.00
	1 2 3	SI371 SI372 SI373	Two Position Spring Return Switches 2 To 1	330.00 393.00 501.00	386.00 519.00 675.00
	1 2	SI300 SI388	Stop-start Switch Spring Return To Centre Position	330.00 393.00	386.00 519.00



SPRING RETURN SWITCHES FOR CONTROL CIRCUITS (TNC)

SWITCHING	POLE	PROGRAMME	DESCRIPTION	25 AMPS SC25 (Rs.).	32 AMPS SC32 (Rs.).
	2	SI009	2NO+2NC	550.00	633.00



SPARES FOR ROTARY SWITCHES

S.No.	DESCRIPTION	SIZE in mm.	UNIT PRICE
I.	INDICATING PLATES (FRONT PLATES)		
	<ul style="list-style-type: none"> ■ 6 TO 16 AMPS ■ 25 & 32 AMPS ■ 40 & 63 AMPS 	<ul style="list-style-type: none"> 48 x 48 64 x 64 88 x 88 	<ul style="list-style-type: none"> 23.00 33.00 44.00
II.	SCRIPT PLATES (MARKING PLATES)		
	<ul style="list-style-type: none"> ■ UP TO 16 AMPS ■ 16 TO 32 AMPS ■ 40 & 63 AMPS 	<ul style="list-style-type: none"> 48 x 48 64 x 64 88 x 88 	<ul style="list-style-type: none"> 5.00 8.00 12.00
III.	KNOBS		
	<ul style="list-style-type: none"> ■ Tear Drop For 6 To 16 Amps ■ Tear Drop For 16 To 32 Amps ■ Tear Drop For 40 & 63 Amps 	<ul style="list-style-type: none"> 48 x 48, 48 x 60 64 x 64, 64 x 80 88 x 88 	<ul style="list-style-type: none"> 13.00 23.00 35.00
IV.	HANDLES		
	<ul style="list-style-type: none"> ■ Flag Handle For 16 Amps ■ Flag Handle For 25 & 32 Amps ■ Ball Handle For 16 To 32 Amps ■ Ball Handle For 40 & 63 Amps ■ Pistol Grip Handle For 16 To 32 Amps ■ Long Handle For 16 To 32 Amps ■ Lever Handle For 40 & 63 Amps 	<ul style="list-style-type: none"> 48 x 48, 48 x 60 64 x 64, 64 x 80 64 x 64, 64 x 80 88 x 88 64 x 64, 64 x 80 64 x 64, 64 x 80 88 x 88 	<ul style="list-style-type: none"> 13.00 23.00 37.00 58.00 44.00 44.00 64.00
V.	MOUNTING PLATES (FOR REAR MOUNTING)		
	<ul style="list-style-type: none"> ■ 6 TO 16 AMPS ■ 25 & 32 AMPS ■ 40 & 63 AMPS 	<ul style="list-style-type: none"> 48 x 48 64 x 64 88 x 88 	<ul style="list-style-type: none"> 5.00 1.00 15.00
VI.	WALL TYPE MOUNTING BOXES (UP TO 32 AMPS MAXIMUM 4 CONTACTS)		
	<ul style="list-style-type: none"> ■ SS Enclosure (metal Box) - M17 		170.00
VII.	PADLOCKS		
	<ul style="list-style-type: none"> ■ B33 FOR 16 AMPS ■ B33 FOR 25 & 32 AMPS ■ B33 FOR 40 & 63 AMPS ■ B30 FOR 40 & 63 AMPS 	<ul style="list-style-type: none"> 65 x 65 80 x 80 95 x 95 98 x 126 	<ul style="list-style-type: none"> 74.00 110.00 148.00 220.00